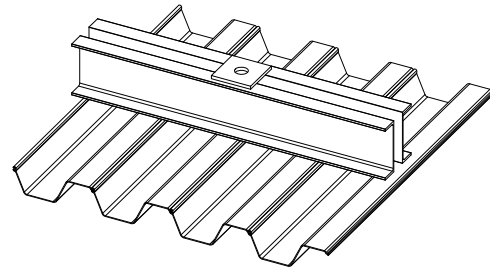


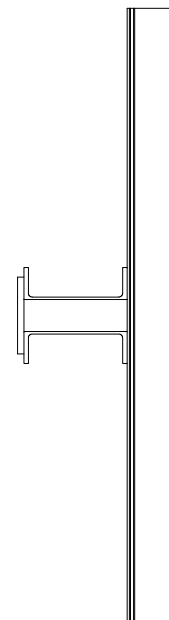
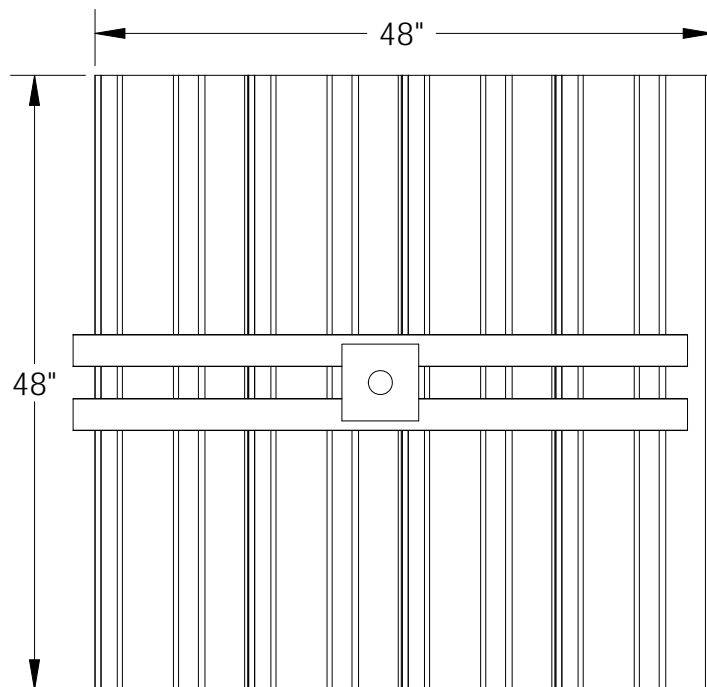


# DMA-16 Anchor



Drawn: JAB      Date: 06/18/09

<b>Bearing Area</b>	16 ft <sup>2</sup>	
<b>Longitudinal (Sheet) Max Allowable Bending Moment</b>	8,400 ft-lb	11,389 N-m
<b>Transverse (Beam) Max Allowable Bending Moment</b>	18,334 ft-lb	24,858 N-m
<b>Max Allowable Rod Load</b>	16,517 lbs	73,471 N
<b>Material/Features</b>	6061-T6 Aluminum; Fully Welded	
<b>Tie Rod Compatibility</b>	1-3/4" Aluminum Rod	



Physical properties are defined by ASTM testing standards, The Aluminum Association Design Manual, and/or standard engineering practice. The values shown are nominal and may vary. The information found in this document is believed to be true and accurate. No warranties of any kind are made as to the suitability of any CMI product for particular applications or the results obtained there from. ShoreGuard, C-Loc, TimberGuard, GeoGuard, Dura Dock, Shore-All, and Gator Gates are registered trademarks of Crane Materials International. ArmorWare, Ultra Composite, GatorDocks, GatorBridge and CMI Waterfront Solutions are trademarks of Crane Materials International. United States and International Patent numbers 5,145,287; 6,000,883; 6,033,155; 6,053,666; D420,154; 6,575,667; 7,059,807; 7,056,066; 7,025,539; 7,393,482; Other patents pending. © 2009 Crane Materials International. All Rights Reserved.