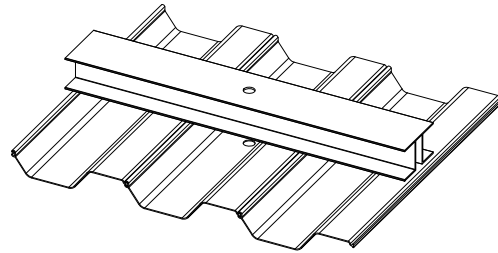


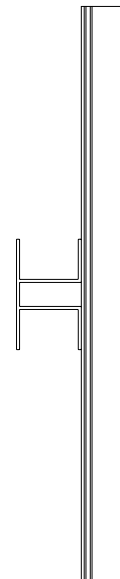
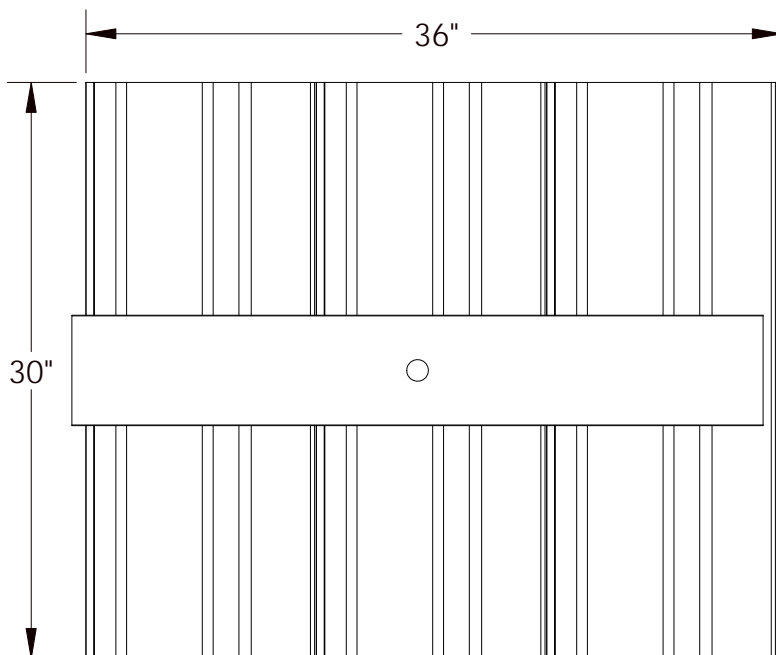


DMA-7 Anchor



Drawn: JAB Date: 06/18/09

Bearing Area	7.5 ft ²	
Longitudinal (Sheet) Max Allowable Bending Moment	2,700 ft-lb	3,661 N-m
Transverse (Beam) Max Allowable Bending Moment	2,951 ft-lb	4,001 N-m
Max Allowable Rod Load	11,713 lbs	52,102 N
Material/Features	6061-T6 Aluminum; Fully Welded	
Tie Rod Compatibility	1" Aluminum Rod	



Physical properties are defined by ASTM testing standards, The Aluminum Association Design Manual, and/or standard engineering practice. The values shown are nominal and may vary. The information found in this document is believed to be true and accurate. No warranties of any kind are made as to the suitability of any CMI product for particular applications or the results obtained there from. ShoreGuard, C-Loc, TimberGuard, GeoGuard, Dura Dock, Shore-All, and Gator Gates are registered trademarks of Crane Materials International. ArmorWare, Ultra Composite, GatorDocks, GatorBridge and CMI Waterfront Solutions are trademarks of Crane Materials International. United States and International Patent numbers 5,145,287; 6,000,883; 6,033,155; 6,053,666; D420,154; 6,575,667; 7,059,807; 7,056,066; 7,025,539; 7,393,482; Other patents pending. © 2009 Crane Materials International. All Rights Reserved.