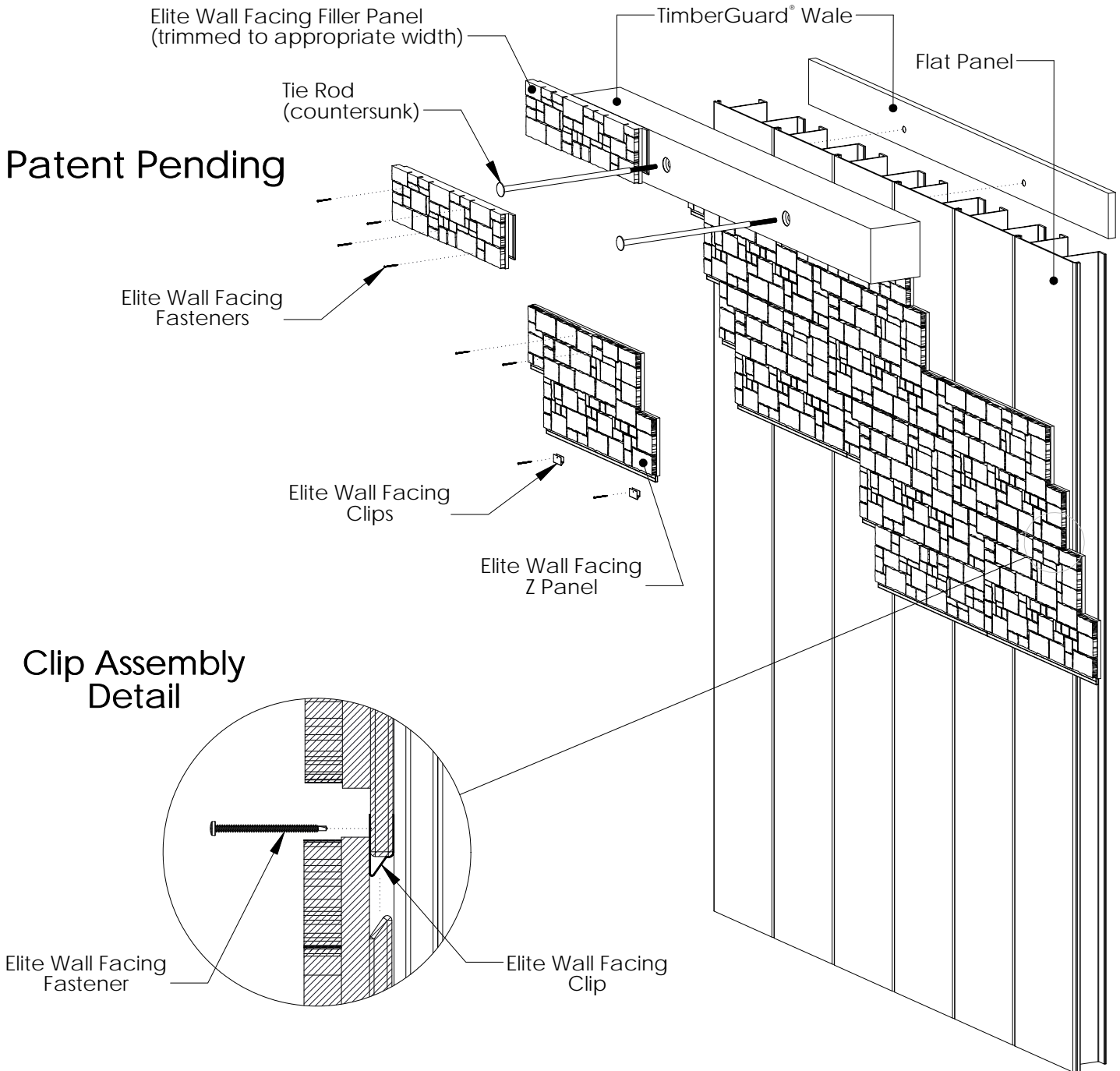




# Elite Wall Facing System

Drawn: JAB Date: 06/18/09



Physical properties are defined by ASTM testing standards, The Aluminum Association Design Manual, and/or standard engineering practice. The values shown are nominal and may vary. The information found in this document is believed to be true and accurate. No warranties of any kind are made as to the suitability of any CMI product for particular applications or the results obtained there from. ShoreGuard, C-Loc, TimberGuard, GeoGuard, Dura Dock, Shore-All, and Gator Gates are registered trademarks of Crane Materials International. ArmorWare, Ultra Composite, GatorDocks, GatorBridge and CMI Waterfront Solutions are trademarks of Crane Materials International. United States and International Patent numbers 5,145,287; 6,000,883; 6,033,155; 6,053,666; D420,154; 6,575,667; 7,059,807; 7,056,066; 7,025,539; 7,393,482; Other patents pending. © 2009 Crane Materials International. All Rights Reserved.

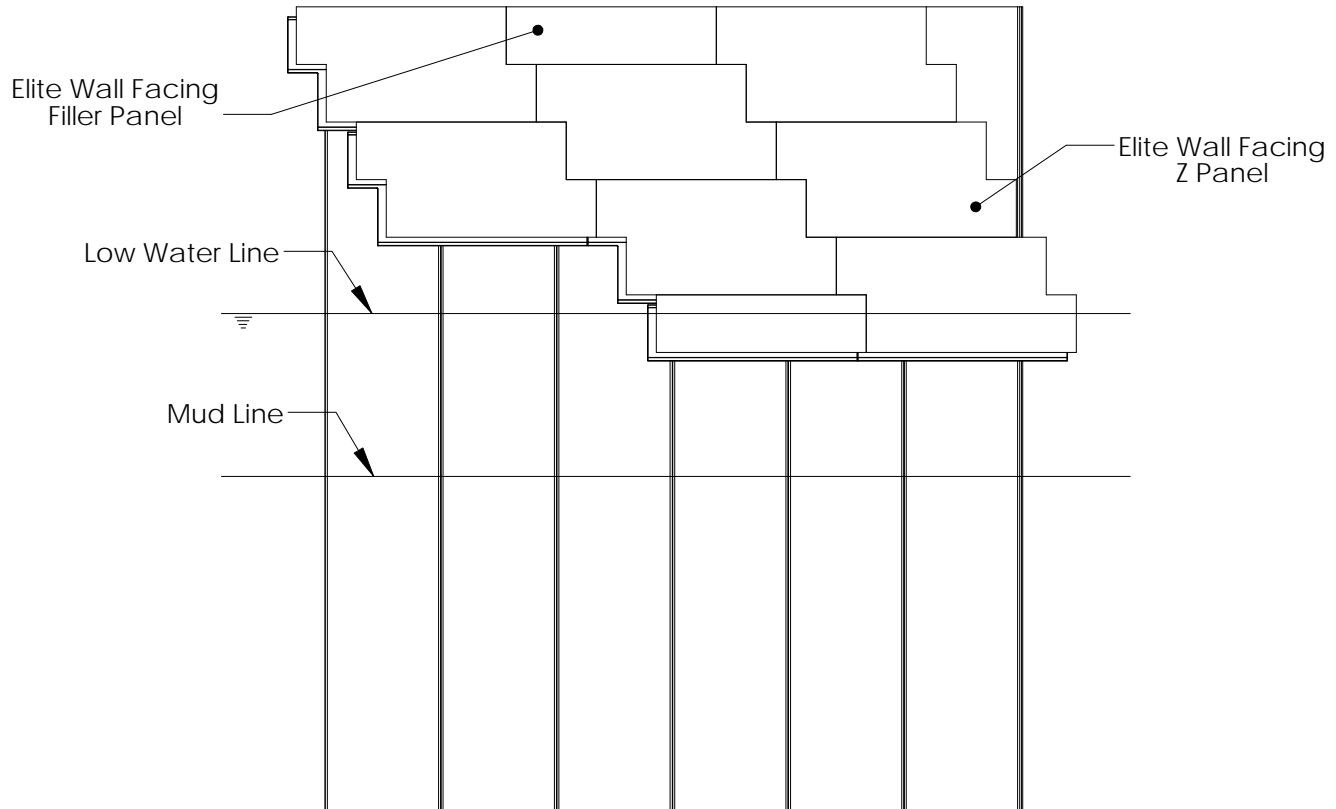


# Elite Wall Facing System

Drawn: JAB

Date: 06/18/09

## Preferred Facing Panel Layout Pattern



The patent pending ShoreGuard Elite seawall system includes ShoreGuard Elite Facing Panels, ShoreGuard Flat Panel sheet piling, and the accompanying ShoreGuard Elite Facing clips, fasteners, caulking and other ancillary accessories.

The ShoreGuard Elite seawall system is designed and manufactured for long-term, low maintenance use in a marine environment. However, in particularly harsh environments where the structure will be subjected to extreme wave action, severe impact, aggressive storm conditions, or moving ice flows, the facing panels may require additional fasteners or bonding to the sheet piling surface other than what are specified in this document.

In some unique calm water, low impact seawall applications, or retaining wall applications, the ShoreGuard Flat Panel sheet piling may be substituted with a different ShoreGuard vinyl box or ShoreGuard aluminum pan sheet piling product. In these cases the ShoreGuard Elite Facing Panels can be attached directly to the outer flange of the vinyl box or aluminum pan sheet.

Physical properties are defined by ASTM testing standards, The Aluminum Association Design Manual, and/or standard engineering practice. The values shown are nominal and may vary. The information found in this document is believed to be true and accurate. No warranties of any kind are made as to the suitability of any CMI product for particular applications or the results obtained there from. ShoreGuard, C-Loc, TimberGuard, GeoGuard, Dura Dock, Shore-All, and Gator Gates are registered trademarks of Crane Materials International. ArmorWare, Ultra Composite, GatorDocks, GatorBridge and CMI Waterfront Solutions are trademarks of Crane Materials International. United States and International Patent numbers 5,145,287; 6,000,883; 6,033,155; 6,053,666; D420,154; 6,575,667; 7,059,807; 7,056,066; 7,025,539; 7,393,482; Other patents pending. © 2009 Crane Materials International. All Rights Reserved.