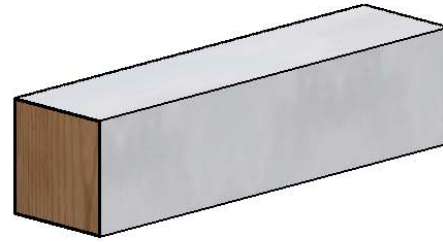


TG 6 x 6 Wale



Moment of Inertia (I) (weak axis)	76 in ⁴	3,163 cm ⁴
Core Material	No. 2 Southern Pine	
Surface Material	UV Resistant Polymer	
Recommended Accessories	90° Corner Brace, AW Rod Kits, TG End Cap, TG Wrap, TG Sealant	
Available Lengths	16 ft, 20 ft	
Standard Colors	Clay, Grey	

Polymer Properties

Resin Properties	ASTM Test Method	Typical Values
Density (lbs/ft ³)	D-4883	59.3
Tensile Strength at Yield (psi)	D-638	3,900
Tensile Strength at Break (psi)	D-638	2,200
Elongation at Yield (%)	D-638	9
Elongation at Break (%)	D-638	600
Tensile Modulus (psi)	D-638	600
Flexural Modulus (psi)	D-790	260,000
Tensile Impact (ft-lbs/in ²)	D-1822	175,000
Coefficient of Linear Thermal Expansion (in/in/°F)	D-4696	7x10 ⁻⁵

SPIB Design Values for No. 2 Mixed Southern Pine

Extreme Fiber in Bending (psi)	Tension Parallel to Grain (psi)	Horizontal Shear (psi)	Compression Perpendicular to Grain (psi)	Compression Parallel to Grain (psi)	Modulus of Elasticity (psi)
850	550	165	375	525	1,000,000

Uniform Load Table

Span (L) (ft)	Max Allowable Uniform Load (Bending Moment) (lbs/ft)	Deflection Allowable Uniform Load (lbs/ft)			
		L/90	L/180	L/240	L/360
4	1,223	-----	-----	-----	-----
5	783	-----	-----	-----	-----
6	544	-----	-----	-----	521
7	400	-----	-----	-----	328
8	306	-----	-----	-----	220
9	242	-----	-----	232	154
10	196	-----	-----	169	113
11	162	-----	-----	127	85
12	136	-----	130	98	65
13	116	-----	102	77	51
14	100	-----	82	62	41
15	87	-----	67	50	33

Physical properties are defined by ASTM testing standards, The Aluminum Association Design Manual, The Naval Facilities Design Manual DM 7.2, The US Army Corps of Engineers General Design Guide: PVC Sheet Pile and/or standard engineering practice. The values shown are nominal and may vary. The information found in this document is believed to be true and accurate. No warranties of any kind are made as to the suitability of any CMI product for particular applications or the results obtained there from. Crane Materials International is a Crane Building Products® company. ShoreGuard®, The ShoreGuard Seawall System™, C-Loc®, TimberGuard®, GeoGuard®, Dura Dock®, Shore-All®, GatorGates®, GatorDock Elite™, ArmorWare™, ArmorRod™, Box Profile™, UltraComposite™, Elite Wall™, Elite Panel™, Elite Fascia Panel™, Flat Panel™, XCR™, XCR Technology™, XCR Vinyl™, GatorBridge™, Gator Aluminum™, Gator Sheet Piling™, GatorDock™, I-Beam Lock™, Textured Slate™, Crane Materials International™ logo, CMI Sheet Piling Solutions™, Aqua Terra System™, Endurance™, Endurance CSPTM, Polaris™, Eclipse™, GridSpine™, 21 Poly™, PileClaw™, SheerScape™, SheerScape Retaining Wall Systems™, Sheer Panel™ and CMI Waterfront Solutions™ are trademarks, service marks or trade names of Crane Materials International, United States and International Patent numbers 4,674,921; 4,690,588; 5,292,208; 5,145,287; 6,000,883; 6,033,155; 6,053,666; D420,154; 6,575,667; 7,059,807; 7,056,066; 7,025,539; 7,393,482; 5,503,503; 5,803,672; 6,231,271; 1,245,061CA and other patents pending. © 2011 Crane Materials International. All Rights Reserved.