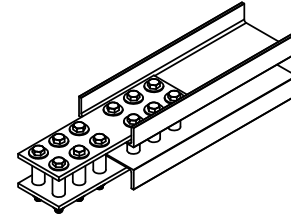


WB-8 Wale

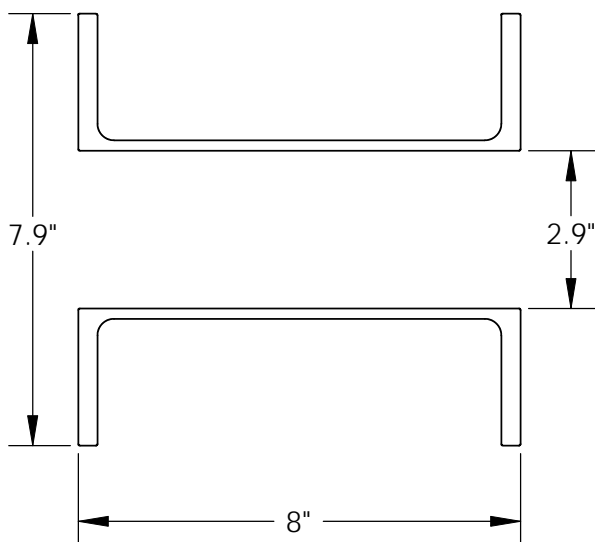


Max Allowable Bending Moment	29,098 ft-lbs**	39,452 N-m**
Max Allowable Point Load*	34,908 lb**	155,280 N**
Section Modulus (Z)	16.4 in ³	269 cm ³
Moment of Inertia (I)	66 in ⁴	2,747 cm ⁴
Design Modulus of Elasticity (E)	10 x10 ⁶ psi	68,900 Mpa
Material	6061-T6 Marine Grade Aluminum	
Required Components	WB-8 Rod Kit	
Standard Colors	Mill Finish	
Standard Packaging	40ft C-channel (2x), Splice Kit, Nylon & SS Fasteners	

* when used with WB-6 Rod Kit

** Stress combinations should be checked using:

$$\left(\frac{\text{Induced Bending Moment}}{\text{Max Allowable Bending Moment}} \right)^{1.5} + \left(\frac{\text{Induced Point Load}}{\text{Max Allowable Point Load}} \right)^{1.5} \leq 1.0$$



Span (L) (ft)	Max Allowable Uniform Load (Bending Moment/ Point Load)	Deflection Allowable Uniform Load (lbs/ft)			
		L/90	L/180	L/240	L/360
4	7,207	----	----	----	----
5	5,414	----	----	----	----
6	4,234	----	----	----	----
7	3,409	----	----	----	2,851
8	2,805	----	----	----	1,910
9	2,349	----	----	2,012	1,341
10	1,995	----	1,956	1,467	978
11	1,716	----	1,469	1,102	735
12	1,490	----	1,132	849	566
13	1,306	----	890	668	445
14	1,154	----	713	534	356
15	1,026	----	579	435	290

Physical properties are defined by ASTM testing standards, The Aluminum Association Design Manual, The Naval Facilities Design Manual DM 7.2, The US Army Corps of Engineers General Design Guide: PVC Sheet Pile and/or standard engineering practice. The values shown are nominal and may vary. The information found in this document is believed to be true and accurate. No warranties of any kind are made as to the suitability of any CMI product for particular applications or the results obtained there from. Crane Materials International is a Crane Building Products® company. ShoreGuard®, The ShoreGuard Seawall System™, C-Loc®, TimberGuard®, GeoGuard®, Dura Dock®, Shore-All®, GatorGates®, GatorDock Elite™, ArmorWare™, ArmorRod™, Box Profile™, UltraComposite™, Elite Wall™, Elite Panel™, Elite Fascia Panel™, Flat Panel™, XCR™, XCR Technology™, XCR Vinyl™, GatorBridge™, Gator Aluminum™, Gator Sheet Piling™, GatorDock™, I-Beam Lock™, Textured Slate™, Crane Materials International™ logo, CMI Sheet Piling Solutions™, Aqua Terra System™, Endurance™, Endurance CSPTM, Polaris™, Eclipse™, GridSpine™, 21 Poly™, PileClaw™, SheerScape™, SheerScape Retaining Wall Systems™, Sheer Panel™ and CMI Waterfront Solutions™ are trademarks, service marks or trade names of Crane Materials International. United States and International Patent numbers 4,674,921; 4,690,588; 5,292,208; 5,145,287; 6,000,883; 6,033,155; 6,053,666; D420,154; 6,575,667; 7,059,807; 7,056,066; 7,025,539; 7,393,482; 5,503,503; 5,803,672; 6,231,271; 1,245,061CA and other patents pending. © 2011 Crane Materials International. All Rights Reserved.